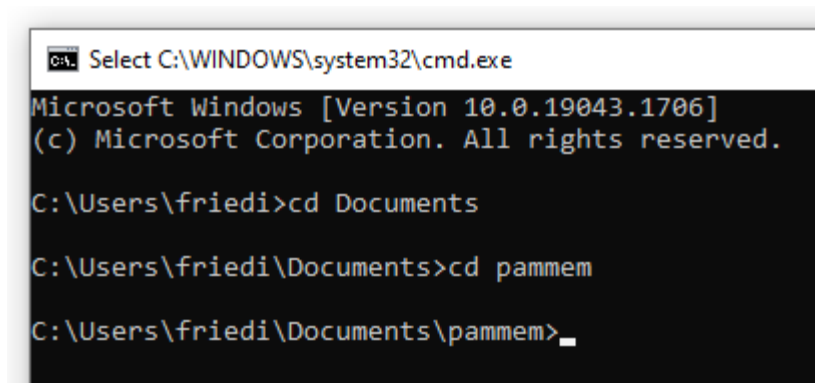


MINI-/DIVING-PAM data rescue

These instructions are for Windows 10, on other versions things can have different names:

- 1) Create a folder to use pammem.exe in your Documents-folder, for example "pammem" and copy the pammem.exe file into it
- 2) Open a console window by pressing the Windows-Key and R, and then entering "cmd" and click "OK"
- 3) Navigate to the directory you just created, using the "cd" command:



```
C:\> Select C:\WINDOWS\system32\cmd.exe

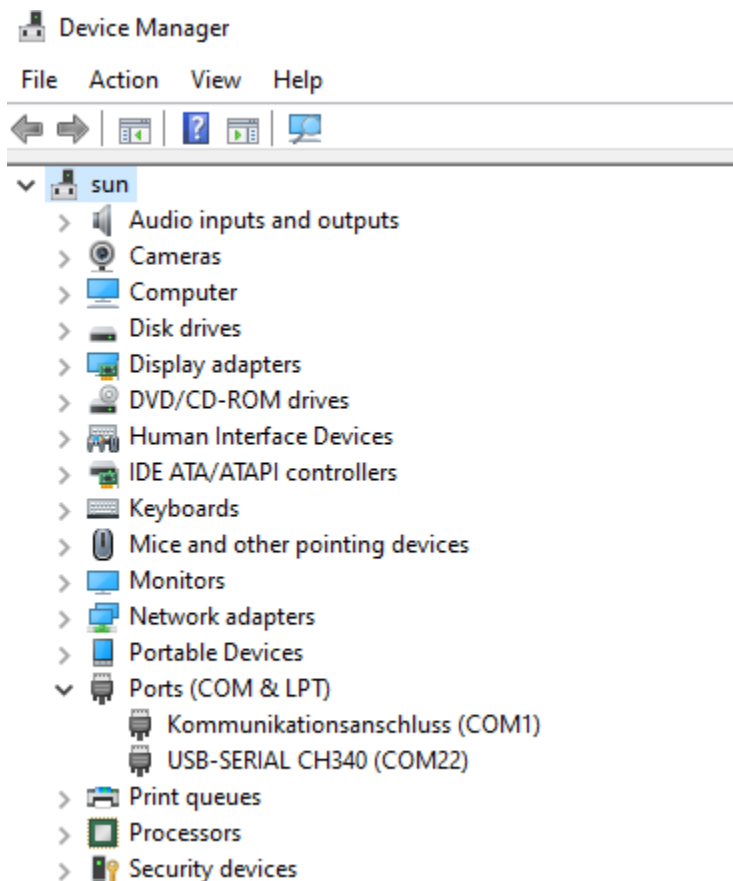
Microsoft Windows [Version 10.0.19043.1706]
(c) Microsoft Corporation. All rights reserved.

C:\Users\friedi>cd Documents

C:\Users\friedi\Documents>cd pammem

C:\Users\friedi\Documents\pammem>
```

- 4) Find the COM-port number of your connected MINI-PAM or DIVING-PAM device. If you have connected it to the computer with an RS232 cable, it's likely that it's 1, with USB adapters you can check in the device manager available on all Windows systems:



You can also run an instance of WinControl-3, it should tell you the port number in the start window.

- 5) Run pammem.exe using the port number as a parameter, this will connect to the device and start downloading data:

```
C:\Users\friedi\Documents\pammem>pammem.exe 22
Model / Version: MINI-PAM / M2.24
Total number of memory datasets: 7
Dataset 2: 2022-05-18 19:34:58.000; F = 991, Fm' = 1079, PAR = 0, Temp. = 26.5
Dataset 3: 2022-05-18 19:35:09.000; F = 1545, Fm' = 1625, PAR = 55, Temp. = 26.5
Dataset 5: 2022-05-18 19:35:24.000; F = 1099, Fm' = 1091, PAR = 81, Temp. = 26.5
Dataset 7: 2022-05-18 19:35:34.000; F = 1027, Fm' = 1024, PAR = 122, Temp. = 26.5

C:\Users\friedi\Documents\pammem>_
```

In the same directory, a file “pammem_out.pam” is created which contains the data and can be opened with WinControl-3 or any software that can read csv-files (using semicolons to mark new columns).